



Planning Committee - Thursday 13 August 2020

18/02582/FULM

Land South Of The Residence

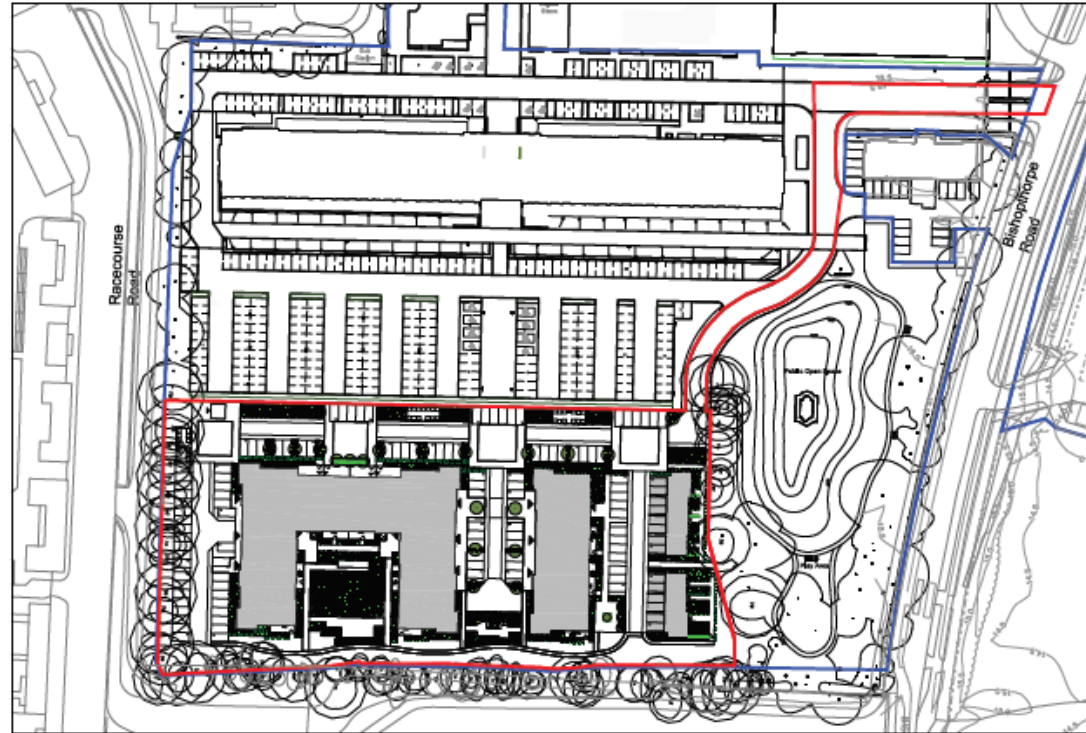
Bishopthorpe Road

View North along
Bishopthorpe Rd





City of York Council Planning Committee -Thursday 13 August
2020



N

B Updated in line with amended 06.04.20 DP CB scheme

A Updated in line with amended 22.01.20 DP CB scheme

revision	date	by	chk

All dimensions to be verified on site and the Architect informed of any discrepancies. All drawings and specifications should be read in conjunction with the Health and Safety Plan. All conflicts should be reported to the appointed Principal Designer.

This drawing is the Property of Bowman Riley Architects Limited ©
DO NOT SCALE FROM THIS DRAWING

preliminary comment construction
 planning tender record

BOWMAN RILEY
ARCHITECTS

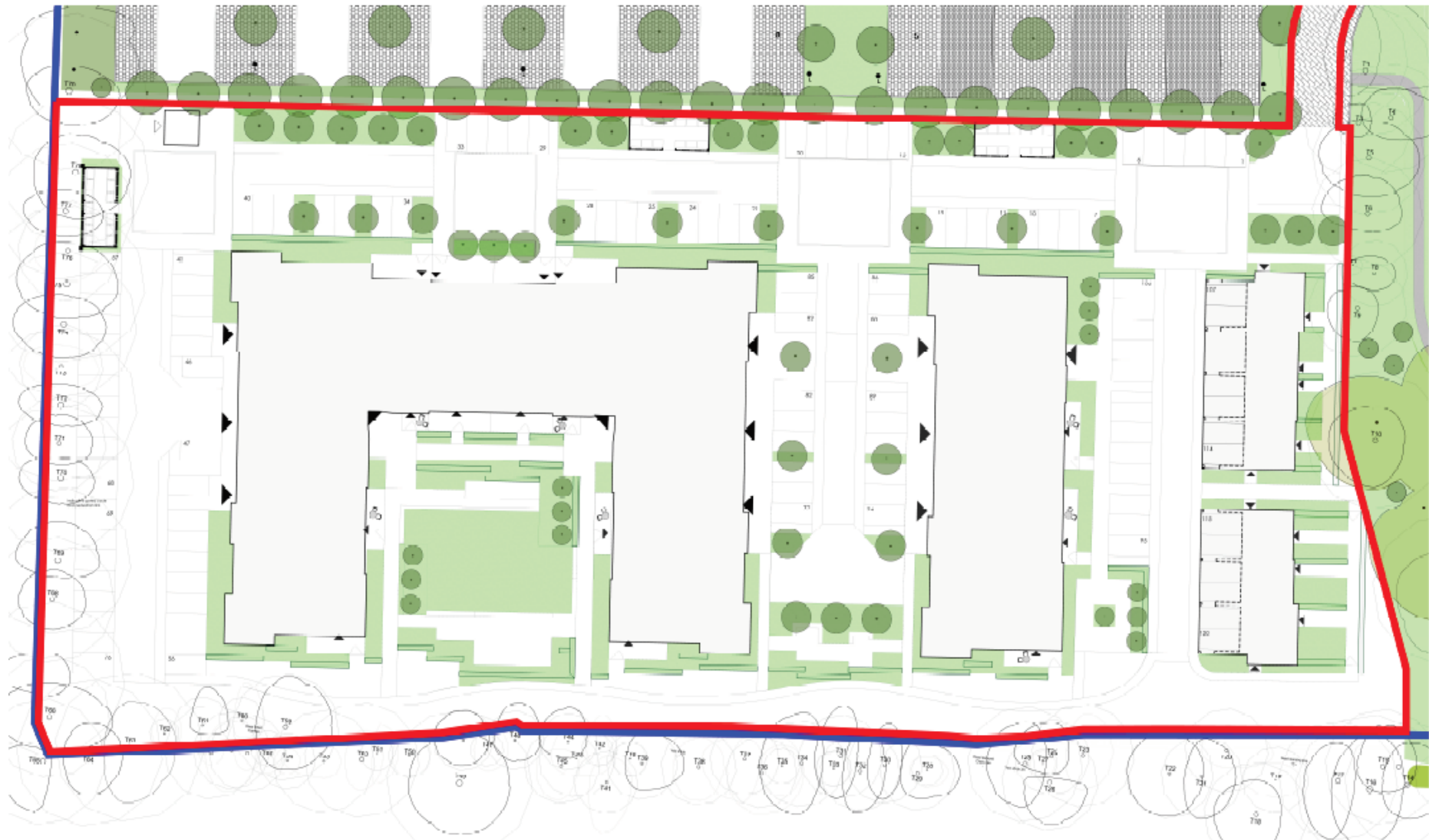
Toronto Square - Toronto Street - Leeds - LS1 2JZ
Leeds | London | Belfast
0113 281 7570 • www.bowmanriley.com

drawn by	checked by	date	scale @ A3
DP	CB	05.11.2018	1:1250

**The Chocolate Works, York
Proposed Residential Development**

Site Location Plan

project number	drawing number	revision
7968	P(000)001	B



Refer to TPM Landscape's layout for detailed landscape design

Car Parking: 120no. spaces

Cycles: 132no. spaces

Indicative gated cycle and pedestrian link through Western boundary. Pending level information, land ownership confirmations and Council approval for connection to existing pathway beyond.

Construction of all services must allow for storm water management through appropriate drainage or storm and safety space saving cycle

Designation of all cycle spaces

Shared cycle routes

Pre completion information

The design will take the following health and safety risks relating to this drawing into account:

ref	description	severity	likelihood	risk	status
1	Construction of all services must allow for storm water management through appropriate drainage or storm and safety space saving cycle	High	High	Very High	Open
2	Designation of all cycle spaces	Medium	Medium	High	Open
3	Shared cycle routes	Medium	Medium	High	Open
4	Pre completion information	Medium	Medium	High	Open

Revision table:

no	description	date	by	checked by
1	Initial design	20/05/19	CB	CB
2	Revised design	20/05/19	CB	CB
3	Final design	20/05/19	CB	CB

Approval table:

no	description	date	by	checked by
1	Initial design	20/05/19	CB	CB
2	Revised design	20/05/19	CB	CB
3	Final design	20/05/19	CB	CB

UNREBRIDGE HOMES

The Chocolate Works, York
Proposed Residential Development

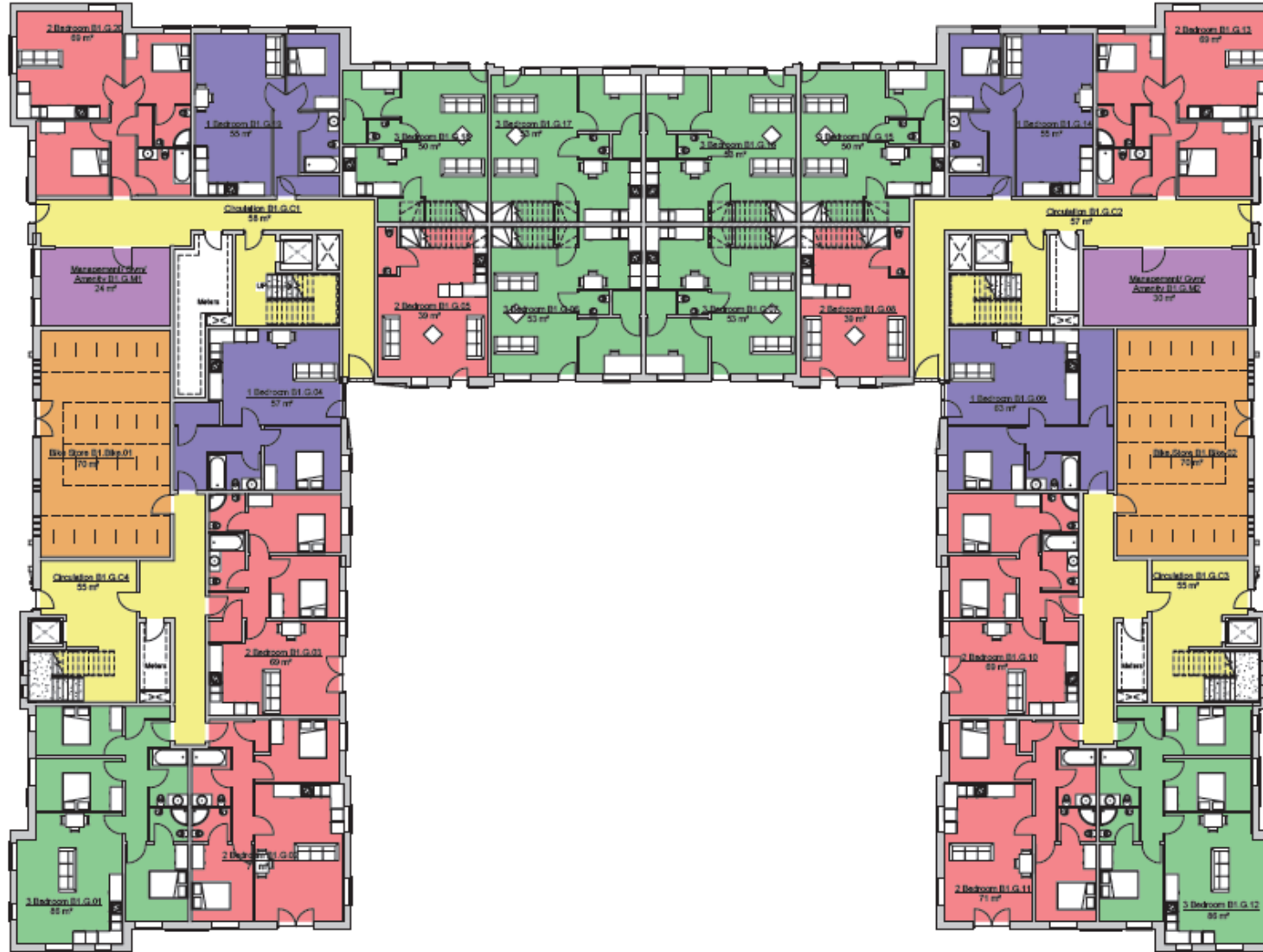
down by: CB, checked by: CB, date: 30.05.19, scale: A1

BOWMAN RILEY ARCHITECTS

As Proposed Site Plan

project number	drawing number	revision
7988	R/000/000	N

Block 1 Ground Floor Plan



Block 1 Ground Floor Plan
1 : 100

Consultation with the client and other stakeholders is required to ensure the proposed design meets the needs of all stakeholders and is in line with the relevant legislation. The design is subject to change and is not a final design. The client is responsible for ensuring that the design meets the needs of all stakeholders and is in line with the relevant legislation.

ref	revised	date

Area Schedule Block 1 Ground Floor

Number	Type	Area
B1.G.01	3 Bedroom	86 m ²
B1.G.02	2 Bedroom	71 m ²
B1.G.03	2 Bedroom	69 m ²
B1.G.04	1 Bedroom	57 m ²
B1.G.05	2 Bedroom	39 m ²
B1.G.05	2 Bedroom	51 m ²
B1.G.06	3 Bedroom	53 m ²
B1.G.06	3 Bedroom	53 m ²
B1.G.07	3 Bedroom	53 m ²
B1.G.07	3 Bedroom	53 m ²
B1.G.08	2 Bedroom	39 m ²
B1.G.08	2 Bedroom	51 m ²
B1.G.09	1 Bedroom	63 m ²
B1.G.10	2 Bedroom	69 m ²
B1.G.11	2 Bedroom	71 m ²
B1.G.12	3 Bedroom	86 m ²
B1.G.13	2 Bedroom	69 m ²
B1.G.14	1 Bedroom	55 m ²
B1.G.15	3 Bedroom	50 m ²
B1.G.15	3 Bedroom	52 m ²
B1.G.16	3 Bedroom	53 m ²
B1.G.16	3 Bedroom	53 m ²
B1.G.17	3 Bedroom	53 m ²
B1.G.17	3 Bedroom	53 m ²
B1.G.18	3 Bedroom	50 m ²
B1.G.18	3 Bedroom	52 m ²
B1.G.19	1 Bedroom	55 m ²
B1.G.20	2 Bedroom	69 m ²
Totals: 28		1626 m ²

0	Update/Issued/Issued from Client	20.02.18	DP	CB
1	Client/Architect	20.02.18	DP	CB
2	Update/Issued/Issued from City of York Council	26.11.18	DP	CB
3	Layout updated to plan in feedback	26.02.18	DP	CB
4	Changes updated to plan in feedback	26.02.18	DP	CB
5	Layout updated to plan in feedback	26.02.18	DP	CB
6	Layout updated to plan in feedback	26.02.18	DP	CB
7	Layout updated to plan in feedback	26.02.18	DP	CB
8	Layout updated to plan in feedback	26.02.18	DP	CB
9	Layout updated to plan in feedback	26.02.18	DP	CB
10	Layout updated to plan in feedback	26.02.18	DP	CB
11	Layout updated to plan in feedback	26.02.18	DP	CB
12	Layout updated to plan in feedback	26.02.18	DP	CB
13	Layout updated to plan in feedback	26.02.18	DP	CB
14	Layout updated to plan in feedback	26.02.18	DP	CB
15	Layout updated to plan in feedback	26.02.18	DP	CB
16	Layout updated to plan in feedback	26.02.18	DP	CB
17	Layout updated to plan in feedback	26.02.18	DP	CB
18	Layout updated to plan in feedback	26.02.18	DP	CB
19	Layout updated to plan in feedback	26.02.18	DP	CB
20	Layout updated to plan in feedback	26.02.18	DP	CB
21	Layout updated to plan in feedback	26.02.18	DP	CB
22	Layout updated to plan in feedback	26.02.18	DP	CB
23	Layout updated to plan in feedback	26.02.18	DP	CB
24	Layout updated to plan in feedback	26.02.18	DP	CB
25	Layout updated to plan in feedback	26.02.18	DP	CB
26	Layout updated to plan in feedback	26.02.18	DP	CB
27	Layout updated to plan in feedback	26.02.18	DP	CB
28	Layout updated to plan in feedback	26.02.18	DP	CB

All dimensions to be verified on site, and the builder is advised of any discrepancies. Drawings and specifications shall be used in conjunction with the Terms and Conditions of the contract. The client is responsible for ensuring that the design meets the needs of all stakeholders and is in line with the relevant legislation. This drawing is the property of Bowman Riley Architects Limited. © DO NOT SCALE THIS DRAWING.

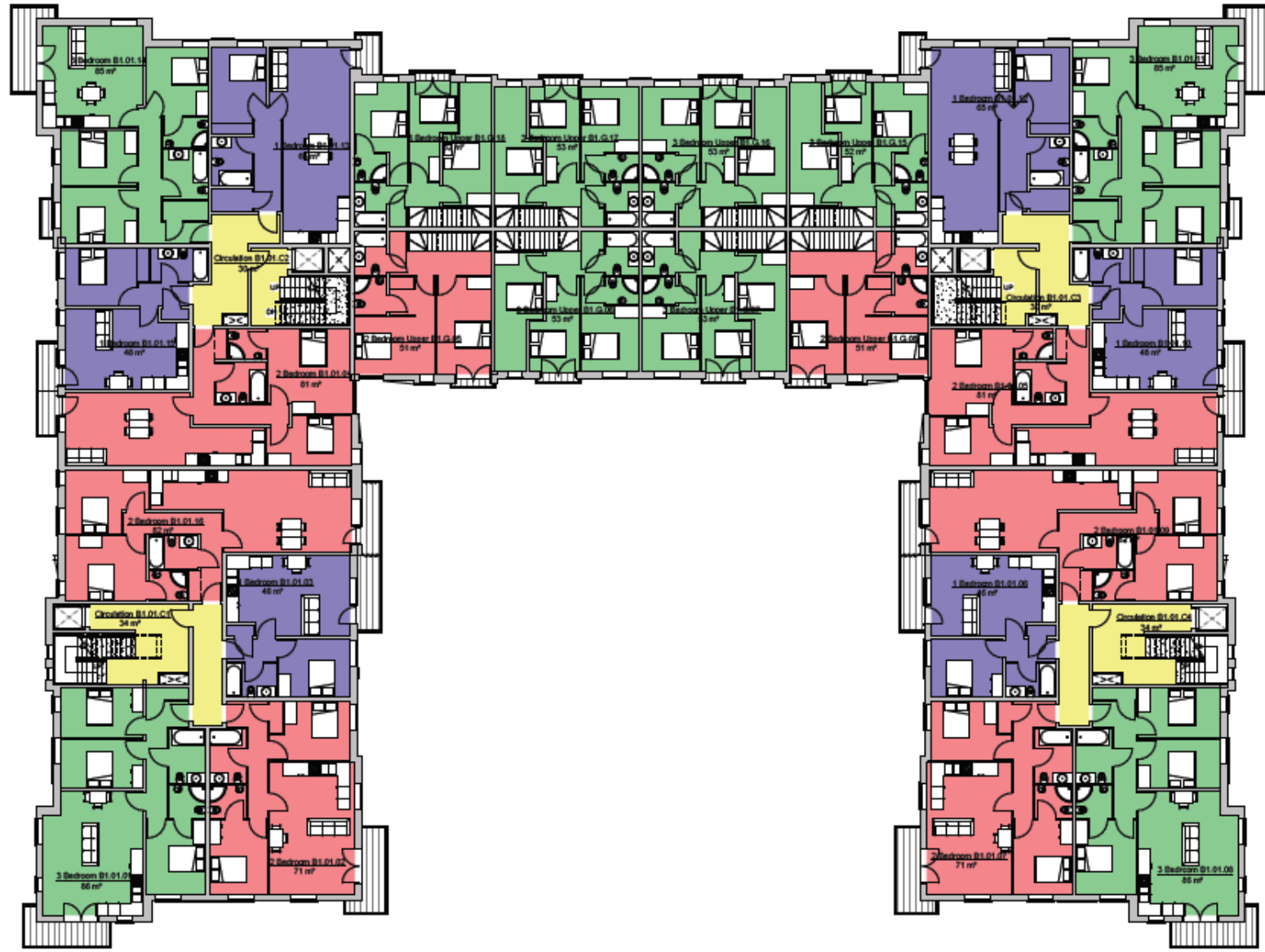
preliminary comment construction
 planning tender record

BOWMAN RILEY
 ARCHITECTS
 Towns Road, Thoresby, Leeds, LS2 2NQ
 Leeds 1, London 1, Gifford
 0113 381113 www.bowmanriley.com

Stonebridge Homes
 drawn by: DP checked by: CB date: 30/07/18 scale: A1
The Chocolate Works York
 Block 1 Ground Floor
 project number: 7588 drawing number: P(000)010 revision: G

File reference: P1788 - Chocolate Works York - 07 Revised - Shared - Block 1 Planning Model_CENTRAL.rvt

Block 1 First Floor Plan



Block 1 First Floor Plan
1 : 100

Contractor shall be responsible and ensure the high contractor has provided through and approved information on all health and safety aspects relating to the design described in this drawing within the scope of:
 - Design and construction details
 - Method statement
 - Permit to work
 - Pre-construction information
 The design team shall be holding health and safety information in the design team has been cleared during the design process

Area Schedule Block 1 First Floor

Number	Type	Area
B1.01.01	3 Bedroom	66 m²
B1.01.02	2 Bedroom	71 m²
B1.01.03	1 Bedroom	46 m²
B1.01.04	2 Bedroom	61 m²
B1.01.05	2 Bedroom	61 m²
B1.01.06	1 Bedroom	46 m²
B1.01.07	2 Bedroom	71 m²
B1.01.08	3 Bedroom	66 m²
B1.01.09	2 Bedroom	61 m²
B1.01.10	1 Bedroom	46 m²
B1.01.11	3 Bedroom	66 m²
B1.01.12	1 Bedroom	46 m²
B1.01.13	1 Bedroom	46 m²
B1.01.14	3 Bedroom	66 m²
B1.01.15	1 Bedroom	46 m²
B1.01.16	2 Bedroom	61 m²

- 1 Update for residential in City of York Council 16.02.20 DP CB
- 2 Update following feedback from Council 20.12.19 DP CB
- 3 Update for residential in City of York Council 26.11.19 DP CB
- 4 Update for residential in City of York Council 20.02.19 DP CB
- 5 Design update in line with Council feedback for residential in planning 20.04.19 MC CB
- 6 Update for residential in City of York Council 20.04.19 MC CB
- 7 Update for residential in City of York Council 20.04.19 MC CB
- 8 Update for residential in City of York Council 20.04.19 MC CB
- 9 Update for residential in City of York Council 20.04.19 MC CB
- 10 Update for residential in City of York Council 20.04.19 MC CB
- 11 Update for residential in City of York Council 20.04.19 MC CB
- 12 Update for residential in City of York Council 20.04.19 MC CB
- 13 Update for residential in City of York Council 20.04.19 MC CB
- 14 Update for residential in City of York Council 20.04.19 MC CB
- 15 Update for residential in City of York Council 20.04.19 MC CB
- 16 Update for residential in City of York Council 20.04.19 MC CB
- 17 Update for residential in City of York Council 20.04.19 MC CB
- 18 Update for residential in City of York Council 20.04.19 MC CB
- 19 Update for residential in City of York Council 20.04.19 MC CB
- 20 Update for residential in City of York Council 20.04.19 MC CB
- 21 Update for residential in City of York Council 20.04.19 MC CB
- 22 Update for residential in City of York Council 20.04.19 MC CB
- 23 Update for residential in City of York Council 20.04.19 MC CB
- 24 Update for residential in City of York Council 20.04.19 MC CB
- 25 Update for residential in City of York Council 20.04.19 MC CB
- 26 Update for residential in City of York Council 20.04.19 MC CB
- 27 Update for residential in City of York Council 20.04.19 MC CB
- 28 Update for residential in City of York Council 20.04.19 MC CB
- 29 Update for residential in City of York Council 20.04.19 MC CB
- 30 Update for residential in City of York Council 20.04.19 MC CB
- 31 Update for residential in City of York Council 20.04.19 MC CB
- 32 Update for residential in City of York Council 20.04.19 MC CB
- 33 Update for residential in City of York Council 20.04.19 MC CB
- 34 Update for residential in City of York Council 20.04.19 MC CB
- 35 Update for residential in City of York Council 20.04.19 MC CB
- 36 Update for residential in City of York Council 20.04.19 MC CB
- 37 Update for residential in City of York Council 20.04.19 MC CB
- 38 Update for residential in City of York Council 20.04.19 MC CB
- 39 Update for residential in City of York Council 20.04.19 MC CB
- 40 Update for residential in City of York Council 20.04.19 MC CB
- 41 Update for residential in City of York Council 20.04.19 MC CB
- 42 Update for residential in City of York Council 20.04.19 MC CB
- 43 Update for residential in City of York Council 20.04.19 MC CB
- 44 Update for residential in City of York Council 20.04.19 MC CB
- 45 Update for residential in City of York Council 20.04.19 MC CB
- 46 Update for residential in City of York Council 20.04.19 MC CB
- 47 Update for residential in City of York Council 20.04.19 MC CB
- 48 Update for residential in City of York Council 20.04.19 MC CB
- 49 Update for residential in City of York Council 20.04.19 MC CB
- 50 Update for residential in City of York Council 20.04.19 MC CB
- 51 Update for residential in City of York Council 20.04.19 MC CB
- 52 Update for residential in City of York Council 20.04.19 MC CB
- 53 Update for residential in City of York Council 20.04.19 MC CB
- 54 Update for residential in City of York Council 20.04.19 MC CB
- 55 Update for residential in City of York Council 20.04.19 MC CB
- 56 Update for residential in City of York Council 20.04.19 MC CB
- 57 Update for residential in City of York Council 20.04.19 MC CB
- 58 Update for residential in City of York Council 20.04.19 MC CB
- 59 Update for residential in City of York Council 20.04.19 MC CB
- 60 Update for residential in City of York Council 20.04.19 MC CB
- 61 Update for residential in City of York Council 20.04.19 MC CB
- 62 Update for residential in City of York Council 20.04.19 MC CB
- 63 Update for residential in City of York Council 20.04.19 MC CB
- 64 Update for residential in City of York Council 20.04.19 MC CB
- 65 Update for residential in City of York Council 20.04.19 MC CB
- 66 Update for residential in City of York Council 20.04.19 MC CB
- 67 Update for residential in City of York Council 20.04.19 MC CB
- 68 Update for residential in City of York Council 20.04.19 MC CB
- 69 Update for residential in City of York Council 20.04.19 MC CB
- 70 Update for residential in City of York Council 20.04.19 MC CB
- 71 Update for residential in City of York Council 20.04.19 MC CB
- 72 Update for residential in City of York Council 20.04.19 MC CB
- 73 Update for residential in City of York Council 20.04.19 MC CB
- 74 Update for residential in City of York Council 20.04.19 MC CB
- 75 Update for residential in City of York Council 20.04.19 MC CB
- 76 Update for residential in City of York Council 20.04.19 MC CB
- 77 Update for residential in City of York Council 20.04.19 MC CB
- 78 Update for residential in City of York Council 20.04.19 MC CB
- 79 Update for residential in City of York Council 20.04.19 MC CB
- 80 Update for residential in City of York Council 20.04.19 MC CB
- 81 Update for residential in City of York Council 20.04.19 MC CB
- 82 Update for residential in City of York Council 20.04.19 MC CB
- 83 Update for residential in City of York Council 20.04.19 MC CB
- 84 Update for residential in City of York Council 20.04.19 MC CB
- 85 Update for residential in City of York Council 20.04.19 MC CB
- 86 Update for residential in City of York Council 20.04.19 MC CB
- 87 Update for residential in City of York Council 20.04.19 MC CB
- 88 Update for residential in City of York Council 20.04.19 MC CB
- 89 Update for residential in City of York Council 20.04.19 MC CB
- 90 Update for residential in City of York Council 20.04.19 MC CB
- 91 Update for residential in City of York Council 20.04.19 MC CB
- 92 Update for residential in City of York Council 20.04.19 MC CB
- 93 Update for residential in City of York Council 20.04.19 MC CB
- 94 Update for residential in City of York Council 20.04.19 MC CB
- 95 Update for residential in City of York Council 20.04.19 MC CB
- 96 Update for residential in City of York Council 20.04.19 MC CB
- 97 Update for residential in City of York Council 20.04.19 MC CB
- 98 Update for residential in City of York Council 20.04.19 MC CB
- 99 Update for residential in City of York Council 20.04.19 MC CB
- 100 Update for residential in City of York Council 20.04.19 MC CB

All dimensions shall be as indicated, and the Architect is not responsible for any discrepancy between the dimensions shown on this drawing and the actual dimensions of the building. All dimensions shall be as indicated, and the Architect is not responsible for any discrepancy between the dimensions shown on this drawing and the actual dimensions of the building.

This drawing is the copyright of Bowmar Riley Architects Limited © 2019 BRL/ARL/HR

preliminary comment construction
 planning tender record

BOWMAR RILEY ARCHITECTS
 Toronto Square - Toronto House - Leeds - L21 2JG
 LONDON | LONDON | BUCKINGHAM
 0113 261 1313 | www.bowmarriley.com

Stonebridge Homes

drawn by checked by date scale @ A1
 DP CB 30/07/18 1 : 100

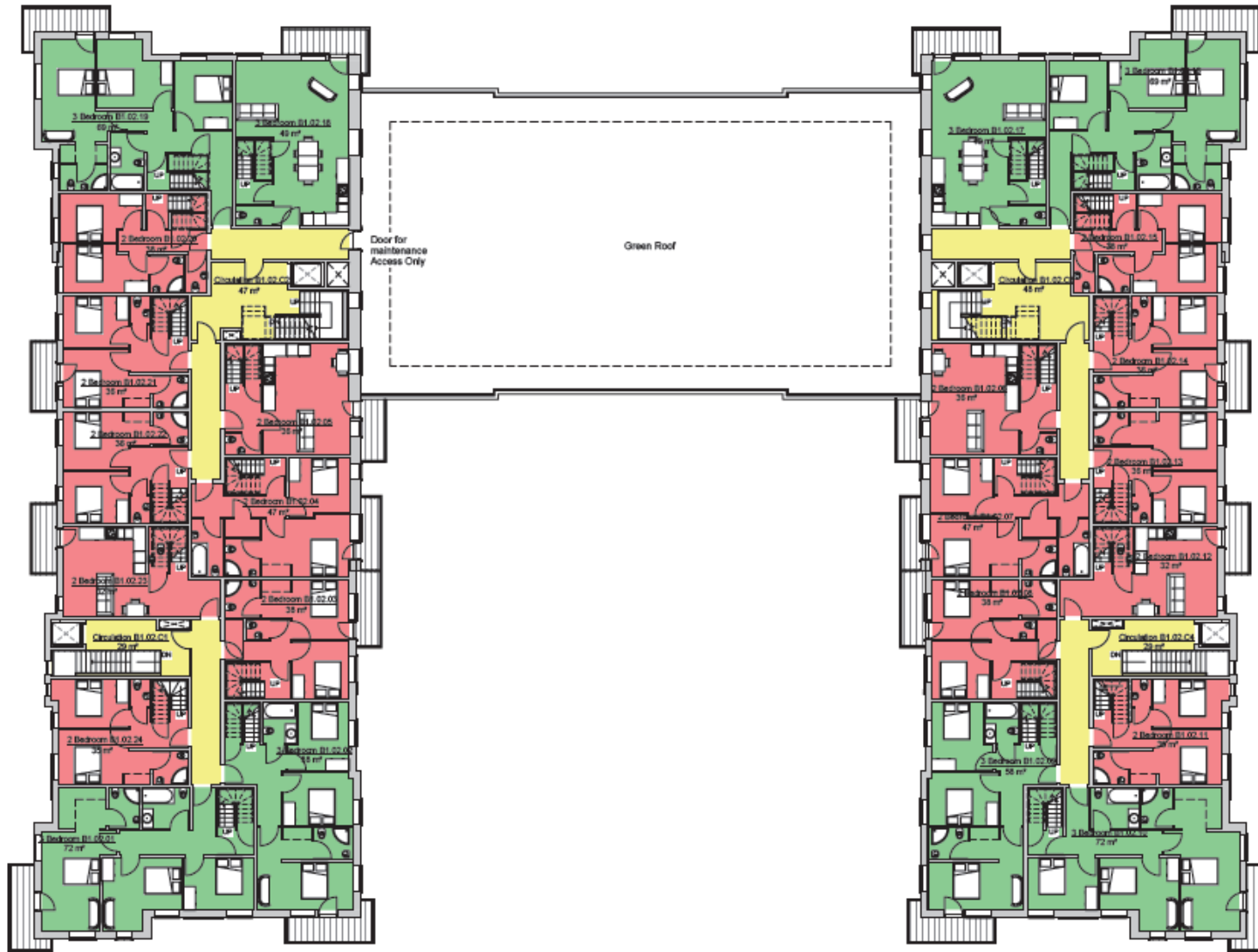
The Chocolate Works
 York

Block 1 First Floor

project number	drawing number	revision
7988	P(000)011	1

File reference: C:\Chocolate Works\U:\Shared\Blocks Planning\010\01_CSB(1)01.dwg

Block 1 Second Floor Plan



Area Schedule Block 1 Second Floor		
Number	Type	Area
B1.02.01	3 Bedroom	72 m²
B1.02.01	3 Bedroom Upper	46 m²
B1.02.02	3 Bedroom	55 m²
B1.02.02	3 Bedroom Upper	49 m²
B1.02.03	2 Bedroom	36 m²
B1.02.03	2 Bedroom Upper	36 m²
B1.02.04	2 Bedroom	47 m²
B1.02.04	2 Bedroom Upper	36 m²
B1.02.05	2 Bedroom	36 m²
B1.02.05	2 Bedroom Upper	34 m²
B1.02.06	2 Bedroom	36 m²
B1.02.06	2 Bedroom Upper	34 m²
B1.02.07	2 Bedroom	47 m²
B1.02.07	2 Bedroom Upper	36 m²
B1.02.08	2 Bedroom	36 m²
B1.02.08	2 Bedroom Upper	36 m²
B1.02.09	3 Bedroom	55 m²
B1.02.09	3 Bedroom Upper	49 m²
B1.02.10	3 Bedroom	72 m²
B1.02.10	3 Bedroom Upper	46 m²
B1.02.11	2 Bedroom	35 m²
B1.02.11	2 Bedroom Upper	37 m²
B1.02.12	2 Bedroom	32 m²
B1.02.12	2 Bedroom Upper	55 m²
B1.02.13	2 Bedroom	36 m²
B1.02.13	2 Bedroom Upper	40 m²
B1.02.14	2 Bedroom	36 m²

Area Schedule Block 1 Second Floor		
Number	Type	Area
B1.02.14	2 Bedroom	42 m²
B1.02.15	2 Bedroom	36 m²
B1.02.15	2 Bedroom	36 m²
B1.02.16	3 Bedroom	69 m²
B1.02.16	3 Bedroom Upper	42 m²
B1.02.17	3 Bedroom	49 m²
B1.02.17	3 Bedroom Upper	49 m²
B1.02.18	3 Bedroom	49 m²
B1.02.18	3 Bedroom Upper	49 m²
B1.02.19	3 Bedroom	69 m²
B1.02.19	3 Bedroom Upper	42 m²
B1.02.20	2 Bedroom	36 m²
B1.02.20	2 Bedroom Upper	36 m²
B1.02.21	2 Bedroom	36 m²
B1.02.21	2 Bedroom Upper	42 m²
B1.02.22	2 Bedroom	36 m²
B1.02.22	2 Bedroom Upper	40 m²
B1.02.23	2 Bedroom	32 m²
B1.02.23	2 Bedroom Upper	56 m²
B1.02.24	2 Bedroom	35 m²
B1.02.24	2 Bedroom Upper	37 m²

1. Application submitted to City of York Council 10.09.20 CB
 2. Application received from Client 20.10.20 CB
 3. Application received from Client 20.11.20 CB
 4. Layout applied to plan in accordance with 20.11.20 CB
 5. Changes applied to plan in accordance with 20.11.20 CB
 6. Application received 20.11.20 CB
 7. Application received 20.11.20 CB
 8. Application received 20.11.20 CB
 9. Application received 20.11.20 CB
 10. Application received 20.11.20 CB
 11. Application received 20.11.20 CB
 12. Application received 20.11.20 CB
 13. Application received 20.11.20 CB
 14. Application received 20.11.20 CB

revision	date	by
1	20.11.20	CB
2	20.11.20	CB

All dimensions to be called on site, and the Architect shall be responsible for any necessary clearance and specifications to be used in accordance with the Building Regulations and Building Act. All drawings shall be prepared in accordance with the Building Regulations and Building Act. The drawing is the property of Bownmariley Architects Limited. © BOWMARILEY ARCHITECTS

preliminary comment construction
 planning tender record



Trade House, The Old Mill, Leeds, LS2 2JQ
 LEEDS | LONDON | BOSTON
 0113 261979 | www.bownmariley.com



drawn by	checked by	date	scale @ A1
DP	CB	24/08/2018	1:100

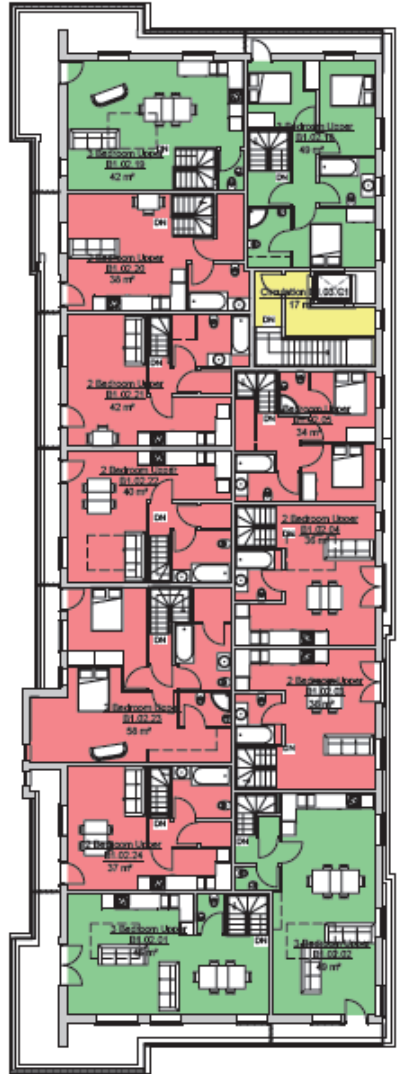
The Chocolate Works
York

Block 1 Second Floor

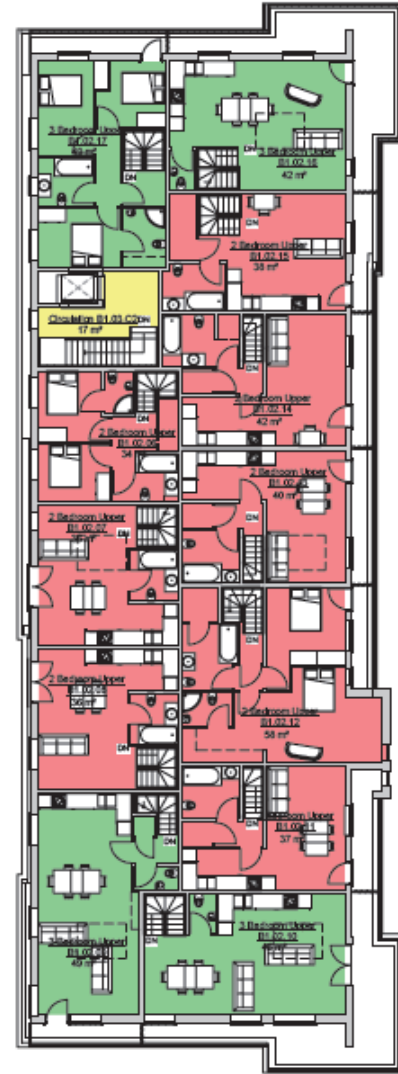
project number	drawing number	revision
7988	P(000)012	1

Block 1 Second Floor Plan
1:100

Block 1 Third Floor Plan



Block 1 Third Floor
1 : 100



Contributor staff and operators must ensure the project complies with the provisions of the Building Regulations and all health and safety requirements, including the Design Structure Code, during the construction phase.

Design Structure Code (DSC) requirements:

- Design Structure Code (DSC)
- Part B (Fire)
- Part E (Sound)
- Part F (Ventilation)

The design team shall ensure the following health and safety requirements are followed throughout the design process:

ref	residual risk

J	Updated for submission to City of York Council	16/03/20	DP	CB
L	Updated drawing to include new Council	20/12/19	DP	CB
M	Updated for submission to City of York Council	20/11/19	DP	CB
N	Updated for submission to City of York Council	20/11/19	DP	CB
O	Updated for submission to City of York Council	20/11/19	DP	CB
P	Updated for submission to City of York Council	20/11/19	DP	CB
Q	Updated for submission to City of York Council	20/11/19	DP	CB
R	Updated for submission to City of York Council	20/11/19	DP	CB
S	Updated for submission to City of York Council	20/11/19	DP	CB
T	Updated for submission to City of York Council	20/11/19	DP	CB
U	Updated for submission to City of York Council	20/11/19	DP	CB
V	Updated for submission to City of York Council	20/11/19	DP	CB
W	Updated for submission to City of York Council	20/11/19	DP	CB
X	Updated for submission to City of York Council	20/11/19	DP	CB
Y	Updated for submission to City of York Council	20/11/19	DP	CB
Z	Updated for submission to City of York Council	20/11/19	DP	CB

All drawings to be checked on site, and the Architect is not responsible for any discrepancy between the drawings and the actual construction. The Architect is not responsible for any discrepancy between the drawings and the actual construction.

This drawing is the property of Bowman Riley Architects Limited. © 2020 Bowman Riley Architects Limited.

preliminary comment contribution
 planning tender record

BOWMAN RILEY ARCHITECTS

Trinity House, Trinity House, Leeds, LS1 2JQ
 London, 1, Square One, 1, Square One, London, E1 1BB
 0113 2811777 www.bowmanriley.com

Stonebridge Homes

drawn by	checked by	date	scale @ A1
DP	CB	30/07/18	1 : 100

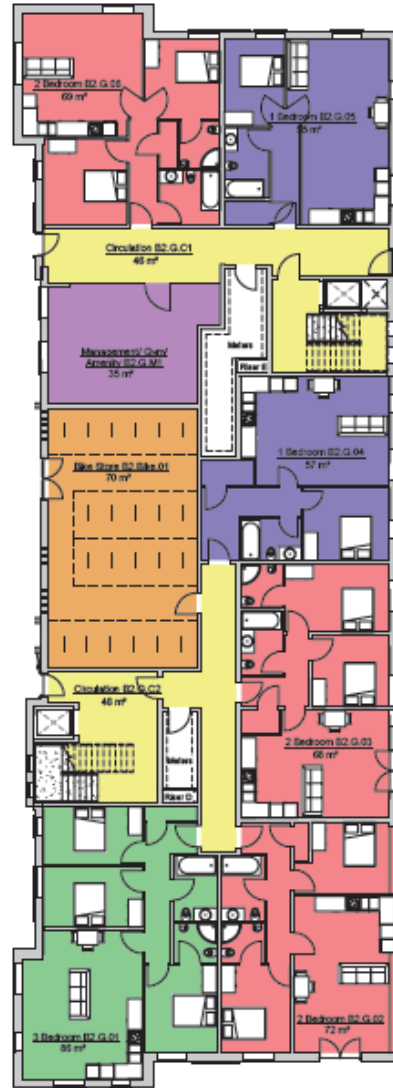
The Chocolate Works York

Block 1 Third Floor

project number	drawing number	revision
7988	P(000)013	J

File reference: P17988 - Chocolate Works York - 07 Revise/1 Shaped Blocks Planning Model - CENTRAL.rvt

Block 2 Ground Floor Plan



Block 2 Ground Floor plan
1 : 100

Construction and specifications must be shown on all plans including the proposed structure and construction on all earth and safety systems relating to the proposed structure. Also showing, where the nature of:

- Structural elements
- Partitions
- Floor levels
- Floor levels
- Partitions

The drawings shall be the following: health and safety, including but not limited to, and have been checked during the design process.

ref	revision
-----	----------

Area Schedule Block 2 Ground Floor

Number	Type	Area
B2.G.01	3 Bedroom	88 m ²
B2.G.02	2 Bedroom	72 m ²
B2.G.03	2 Bedroom	68 m ²
B2.G.04	1 Bedroom	57 m ²
B2.G.05	1 Bedroom	55 m ²
B2.G.06	2 Bedroom	69 m ²
Totals:	6	407 m ²

revision	date	by
F	28/11/18	DP
E	28/11/18	DP
D	28/11/18	CB
C	28/11/18	HC
B	28/11/18	DP
A	28/07/18	DP

All drawings to be made in accordance with the British Standard of any drawings (BS) drawings and specifications shall be made in accordance with the British and BS/EN standards. All drawings shall be made in accordance with the approved Project Design. The drawing is the copyright of Bowman Riley Architects Limited. ©
DO NOT SCALE THIS DRAWING

preliminary
 planning
 comment
 tender
 construction
 record

BOWMAN RILEY ARCHITECTS

Twelve Square - Twelve Street - Leeds - LS1 2JQ
 LEEDS | LONDON | BOSTON
 0113 2811073 | www.bowmanriley.com

Stonebridge Homes

drawn by	checked by	date	scale @ A1
DP	CB	30/07/18	1 : 100

The Chocolate Works
York

Block 2 Ground Floor

project number	drawing number	revision
7888	P(000)014	F

file reference: P:17888 - Chocolate Works/7888 - 07 Revs/BU Sheet01/Block Planning Model_CENTRAL.rvt

Block 2 First Floor Plan



Block 2 First Floor Plan
1 : 100

Construction and operations must ensure the proposed construction is provided through the site in accordance with all applicable planning conditions relating to the proposed development and the proposed site plan. The proposed site plan must include the following:

- Site plan
- Site plan
- Site plan
- Site plan
- Site plan

The proposed site plan must include the following details and information:

- Site plan
- Site plan
- Site plan
- Site plan
- Site plan

ref: revision:

Area Schedule Block 2 First Floor		
Number	Type	Area
B2.01.01	1 Bedroom	50 m²
B2.01.02	2 Bedrooms	112 m²
B2.01.03	2 Bedrooms	80 m²
B2.01.04	1 Bedroom	50 m²
B2.01.05	3 Bedrooms	96 m²
B2.01.06	1 Bedroom	48 m²
B2.01.07	2 Bedrooms	80 m²

1. Approved for submission to City of York Council: 18/03/18 CB CB

2. Approved for submission to City of York Council: 20/11/18 CB CB

3. Approved for submission to City of York Council: 20/11/18 CB CB

4. Approved for submission to City of York Council: 20/11/18 CB CB

5. Approved for submission to City of York Council: 20/11/18 CB CB

6. Approved for submission to City of York Council: 20/11/18 CB CB

7. Approved for submission to City of York Council: 20/11/18 CB CB

8. Approved for submission to City of York Council: 20/11/18 CB CB

9. Approved for submission to City of York Council: 20/11/18 CB CB

10. Approved for submission to City of York Council: 20/11/18 CB CB

11. Approved for submission to City of York Council: 20/11/18 CB CB

12. Approved for submission to City of York Council: 20/11/18 CB CB

13. Approved for submission to City of York Council: 20/11/18 CB CB

14. Approved for submission to City of York Council: 20/11/18 CB CB

15. Approved for submission to City of York Council: 20/11/18 CB CB

16. Approved for submission to City of York Council: 20/11/18 CB CB

17. Approved for submission to City of York Council: 20/11/18 CB CB

18. Approved for submission to City of York Council: 20/11/18 CB CB

19. Approved for submission to City of York Council: 20/11/18 CB CB

20. Approved for submission to City of York Council: 20/11/18 CB CB

BOWMAN RILEY
ARCHITECTS

Trinity House, Trinity Street, Leeds, LS2 2NU
LONDON | LONDON | SHEFFIELD
0113 38 1923 | www.bowmanriley.com

Stonebridge Homes

drawn by	checked by	date	scale
DP	CB	30/07/18	1 : 100

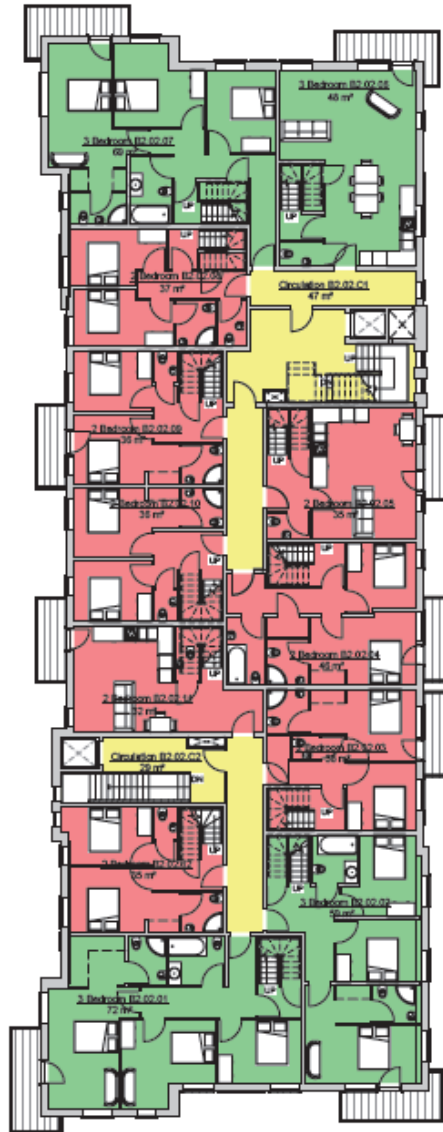
The Chocolate Works
York

Block 2 First Floor

project number	drawing number	revision
7988	P(000)015	H

ref: revision:

Block 2 Second Floor Plan



Block 2 Second Floor Plan
1 : 100

Area Schedule Block 2 Second Floor		
Number	Type	Area
B2-02-01	3 Bedroom	72 m²
B2-02-01	3 Bedroom Upper	46 m²
B2-02-02	3 Bedroom	59 m²
B2-02-02	3 Bedroom Upper	49 m²
B2-02-03	2 Bedroom	36 m²
B2-02-03	2 Bedroom Upper	36 m²
B2-02-04	2 Bedroom	46 m²
B2-02-04	2 Bedroom Upper	36 m²
B2-02-05	2 Bedroom	35 m²
B2-02-05	2 Bedroom Upper	34 m²
B2-02-06	3 Bedroom	48 m²
B2-02-06	3 Bedroom Upper	49 m²
B2-02-07	3 Bedroom	69 m²
B2-02-07	3 Bedroom Upper	42 m²
B2-02-08	2 Bedroom	37 m²
B2-02-08	2 Bedroom Upper	39 m²
B2-02-09	2 Bedroom	36 m²
B2-02-09	2 Bedroom Upper	42 m²
B2-02-10	2 Bedroom	36 m²
B2-02-10	2 Bedroom Upper	40 m²
B2-02-11	2 Bedroom	32 m²
B2-02-11	2 Bedroom Upper	59 m²
B2-02-12	2 Bedroom	35 m²
B2-02-12	2 Bedroom Upper	37 m²
Totals		1050 m²

Construction staff and operators must ensure the finished structure has provided strength and structural information on all structural safety systems relating to the design identified in this drawing. Reduce the level of:

- Designation from full to reduced
- Period to start

The design team shall ensure the following health and safety risk assessment is completed and implemented during the design process.

D. Updated for submission to City of York Council 26.11.16 DP CB
 E. Locally updated for planning feedback 26.03.16 DP CB
 F. Drawings updated to comply Council feedback for 26.04.16 DP CB
 G. Updated for planning
 H. Area in adherence with consent as per the label 26.04.16 HMC CB
 I. Drawings with the planning consent conditions.
 J. Revision applied as per City Council's request.
 K. Locally updated to per the latest legal team the building services to include the fire detection and the work. Status changed to 'Consent'
 L. Drawings updated for planning consent rules 20.11.15 DP CB
 M. Extracts and rest plan updated for working sheet 2. 24.05.16 DP CB

revision	date	by
1	26.11.16	DP CB
2	26.03.16	DP CB
3	26.04.16	DP CB
4	26.04.16	HMC CB
5	20.11.15	DP CB
6	24.05.16	DP CB

All dimensions to be verified on site. All dimensions shall be subject to the accuracy of the drawings and specifications. It is the responsibility of the contractor to verify all dimensions on site. All dimensions shall be subject to the approved Project Designer.
 This drawing is the property of Bowman Riley Architects Limited.
 DO NOT SCALE THIS DRAWING

preliminary comment construction
 planning tender record

BOWMAN RILEY ARCHITECTS
 Towns House, Towns Road, Leeds, LS2 2PL
 LEEDS | LONDON | GUILDFORD
 0113 261107 | www.bowmanriley.com

Stonebridge Homes

drawn by	checked by	date	scale @ A1
DP	CB	24/08/2016	1 : 100

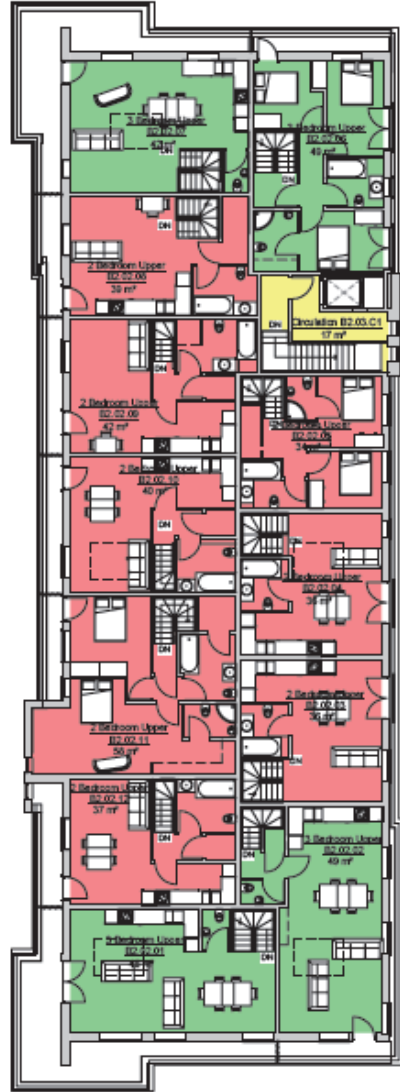
The Chocolate Works
York

Block 2 Second Floor

project number	drawing number	revision
7588	P(000)016	G

file reference: P17588 - Chocolate Works/7588 - 07 Rev 01/7 Shaped Blocks Planning Model_CENTRAL.rvt

Block 2 Third Floor Plan



Block 2 Third Floor
1 : 100

Contributor: ACP - it is requested that you ensure the architect considers the proposed changes and any other alterations to all floor and ceiling spaces relating to the changes identified in this drawing before the issue of the drawings.	
Changes to be made to the drawings:	
-	Minor changes
-	Minor changes
-	Minor changes
-	Minor changes
-	Minor changes
The drawings are to be used for planning, health and safety calculations only. Drawings are not to be used for construction during the design process.	
ref:	revision: H

H	Updated the submission to City of York Council	26/11/18	DP	CB
G	Layout updated to plan in section	26/11/18	DP	CB
F	Changes updated to provide Council feedback for	26/11/18	DP	CB
E	Additional to planning			
D	ACCA updated to include plan for window	08/04/18	HC	CB
C	Technical on the second floor. (to be submitted to Council)			
B	Changes updated from planning to include	29/11/18	DP	CB
A	Updated drawing sheet meeting to include	29/11/18	DP	CB
	Updated to include wall lights and TV	29/11/18	DP	CB
	Schedule and not plan updated following sheet	29/11/18	DP	CB
	Workshop			
	revision:	date:	by:	

All dimensions to be checked on site, and the holder is bound by any discrepancy. All drawings and specifications shall be read in conjunction with the Health and Safety Plan, if available, should be required for the completed Project/Design. This drawing is the copyright of Bowman Riley Architects Limited. © 2018 NOT SCALE THIS DRAWING

preliminary
 comment
 construction
 planning
 tender
 record

BOWMAN RILEY ARCHITECTS
 Town Square, Thirsk, North Lincolnshire, Lincs LN22 2NU
 Lincs | London | Brighton
 01522 381573 | www.bowmanriley.com

drawn by	checked by	date	scale @ A1
DP	CB	30/07/18	1 : 100
The Chocolate Works York			
Block 2 Third Floor			
project number	drawing number	revision	
7988	P(000)017	H	

File reference: P17988 - Chocolate Works/7988 - 07 Rev01/01 Shaped Block 2 Third Floor Planning Model_CSBTR018_18

Townhouse (Blocks 3 and 4) Elevations



① Elevation 1
1 : 100



② Elevation 2
1 : 100



③ Elevation 3
1 : 100



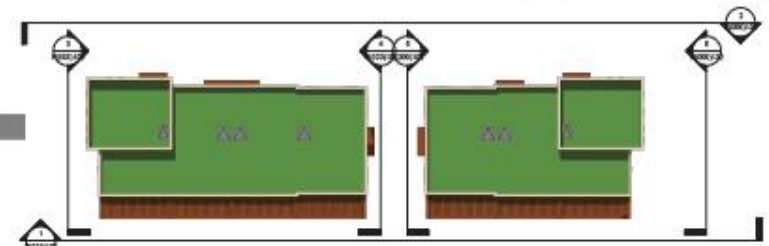
④ Elevation 4
1 : 100



⑤ Elevation 5
1 : 100



⑥ Elevation 6
1 : 100



Reference Plan
1 : 200

Construction shall not proceed until the planning application has been granted through and the construction of all major and safety aspects relating to the design identified in this drawing, including the items of:-
 - Designated traffic sign placement
 - Street lighting
 - Fencing
 - Part of the construction
 The engineer shall be responsible for the health and safety of workers on the drawing and shall be responsible for the design process.

C. Applied for submission to City of York Council	08.03.19	DP	CB
A. Applied for submission to City of York Council	28.11.18	DP	CB
A. Applied for submission to planning	28.11.18	DP	CB
revision	date	by	checked

All dimensions to be unless stated, and the technical content of any drawings, drawings and specifications shall be subject to interpretation and the final and only Plan, all work shall be subject to the City of York website.
 The drawing is the property of Stonebridge Homes Limited.
 © NOT SCALE DRAWING

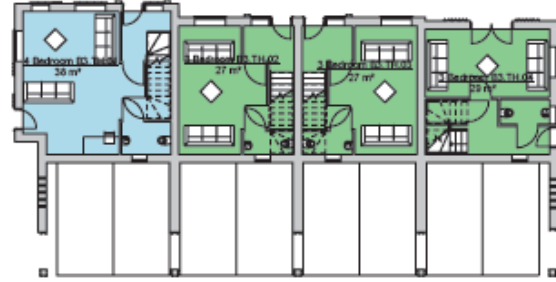
- preliminary
- comment
- construction
- planning
- tender
- record

BOWMANRILEY
ARCHITECTS

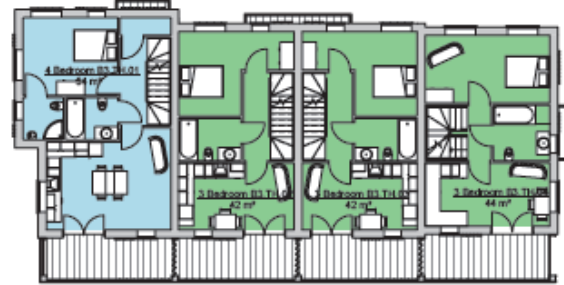
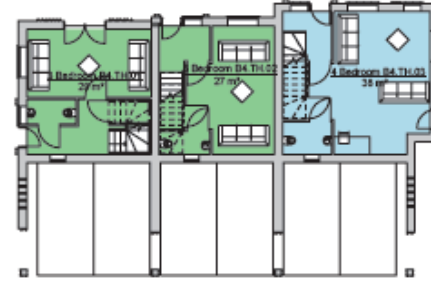
Traffic Park, The Works, Leeds, LS2 2WJ
 Leeds | London | Gifford
 0113 281123 | www.bowmanriley.com

Stonebridge Homes			
drawn by	checked by	date	scale @ A1
DP	CB	05.11.19	As Indicated
The Chocolate Works York			
Blocks 3 & 4 Elevations			
project number	drawing number	revision	
7988	P(000)102	C	

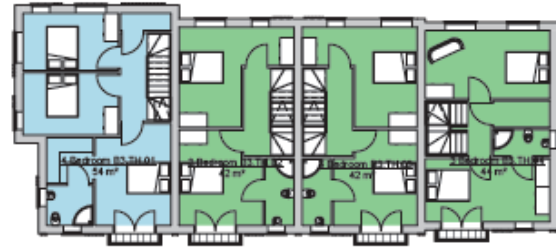
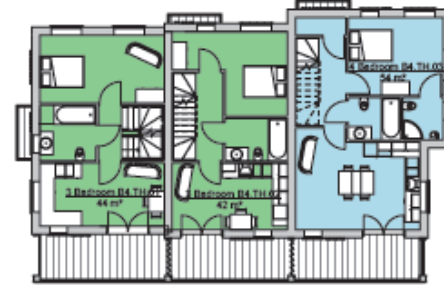
Townhouse Floor plans



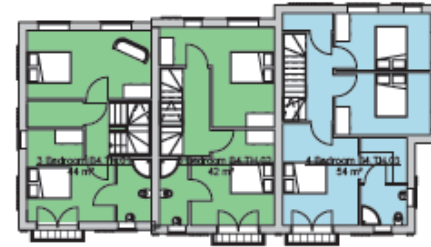
Ground Floor
1 : 100



First Floor
1 : 100



Second Floor
1 : 100



Confirmation sheet and operations sheet must be provided under the provisions of the Building Regulations and any other relevant regulations. It is the responsibility of the client to ensure that the design complies with all relevant regulations and standards. The designer will not be held responsible for any errors or omissions on the part of the client.

ref	revised date

Area Schedule (Rentable)

Number	Name	Area
B3.TH.01	4 Bedroom	146 m ²
B3.TH.02	3 Bedroom	111 m ²
B3.TH.03	3 Bedroom	111 m ²
B3.TH.04	3 Bedroom	116 m ²
B4.TH.01	3 Bedroom	116 m ²
B4.TH.02	3 Bedroom	111 m ²
B4.TH.03	4 Bedroom	146 m ²
7 Total		

All information in the above schedule must be used in conjunction with the relevant Building Regulations and any other relevant regulations. It is the responsibility of the client to ensure that the design complies with all relevant regulations and standards.

E	Updated for submission to City of York Council	05.04.2020	CB
D	Updated for planning appeal	20.02.2020	CB
C	Updated for submission to City of York Council	05.02.2020	CB
B	Updated for submission to City of York Council	28.11.2019	CB
A	Updated for submission to planning	28.11.2019	CB

This drawing is the property of Bowman Riley Architects Limited. It is not to be used in any other project without the written consent of Bowman Riley Architects Limited. Do NOT SCALE THIS DRAWING.

preliminary
 planning
 comment
 tender
 construction
 record

BOWMANRILEY ARCHITECTS

Timothy Ogden - Tim Ogden - Louise - Lee - Dan
 LF0505 - LONDON - GRAFTON
 0115 2611623 - www.bowmanriley.com

Stonebridge Homes

drawn by	checked by	date	scale @
DP	CB	31.03.20	1 : 100

The Chocolate Works
York

Townhouse Floor Plans

project number	drawing number	revision
7988	P (000) 050	E

File reference: P:\7988 - Chocolate Works\7988 - 07 Floor\Townhouse_2020.rvt